

USEFUL INFORMATION

HOW TO SELECT A TYRE

Tyre size and maximum speed of the vehicle.
The maximum load capacity per axle (Load index).
Your style driving and road condition.

MOUNTING & DISMOUNTING

Only get qualified people to mount or dismount your tyres.

TYRE PRESSURE

For safe and economical driving, it is extremely important to drive with the correct tyre pressure.

CHECK THE FOLLOWING ITEMS REGULARLY

Tread Pattern

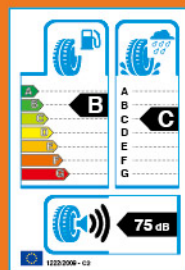
Unusual wear, tread groove separation, bulges.. etc.

Sidewall

Impact, Bulges, Ozone cracking, vehicle contact damage etc.

Tyre Pressure

To safeguard against any pressure lost during driving.



International



Europe



E MARK CERTIFICATION



USA

DOT

DEPARTMENT OF TRANSPORT

China



CERTIFICATE OF COMPULSORY PRODUCT



SmartWay
Transport Partnership
Getting There With Cleaner Air



Printed on Feb. 2023

PACE

TRUCK TYRES

TYRES YOU CAN RELY ON 24/7

2023

Products Manual



DISTRIBUTED BY

These data can be changed by the manufacturer without prior notice and differently applied by regions.

www.sd-international.com

www.facebook.com/PaceTireGlobal

A STRONG PRODUCT POWERED BY DOUBLE COIN & AEOLUS TECHNOLOGY

- Pace TBR, our first private brand, introduced by the company in 2005.
- State of the art manufacturing facility, only opened since 2013.
- Design Engineering from Europe, using the most up to date design technology available.
- All sizes are covered by the necessary certification, such as ECE, GCC, Soncap, NOM and Smartway etc.
- All products have been tested and approved under ECE Regulation 1229/2009, with regards to wet grip, rolling resistance and external noise.
- Tyre making machinery sourced from Germany, The Netherlands and Japan.
- Direct factory programme, ensuring continuity of supply.
- Over 120 sizes and applications are available, with more to be introduced in the near future.



LONGHAUL P3-P7



PM105



PM115



PM117



PM118



PM216



PM329



PM516



REGIONAL P8-P11



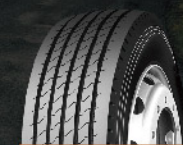
PM128



PM135



PM166



PM168



PM218



PM511



OFF-ROAD P12-P13



PM301



PM305



PM306



MIXED P14-P18



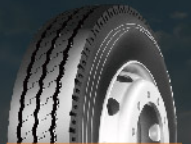
PM201



PM210



PM211



PM268



PM302



PM328



PM508



PM519



PM526



PM105



- Four longitudinal grooves provide good maneuverability and wet skid resistance.
- The fine kerf on the pattern effectively improves the grip performance and reduces the eccentric wear.
- The shoulder groove design can accelerate heat dissipation.

Size	PR	Loading Index	Rim	Tread Depth (mm)		Total Width (mm)	Overall Diameter (mm)	Load Capacity (kg)		Max Pressure (kpa)	Labeling Information		
				32	nds			Single	Dual		W	S	N
7.50R16	14	122/118K	6.00J	12	15.1	215	805	1500	1320	730	—	—	—



PM115



- Special tread compounds designed to fight irregular wear and provide long life in trailer and all-position applications
- 5-rib design promotes premium handling and reduced noise
- Durable casing provides long original tread life and promotes multiple retreads

Size	PR	Loading Index	Rim	Tread Depth (mm)		Total Width (mm)	Overall Diameter (mm)	Load Capacity (kg)		Max Pressure (kpa)	Labeling Information		
				32	nds			Single	Dual		W	S	N
8R22.5	12	128/126M	6.00	13	16.4	210	936	1900	1800	830	D	B	72))
9R22.5	14	136/134M	6.75	14.5	18.3	229	974	2240	2120	830	D	B	72))



PM117



- Advanced tread compounds, design and internal construction provides low rolling resistance and longer mileage
- 5-rib tread design enhances even wear, traction in long haul steer axle positions
- Durable casing provides long original tread life and promotes multiple retreads

Size	PR	Loading Index	Rim	Tread Depth (mm)		Total Width (mm)	Overall Diameter (mm)	Load Capacity (kg)		Max Pressure (kpa)	Labeling Information		
				32	nds			Single	Dual		W	S	N
13R22.5	18	154/151M	9.00	15	18.9	320	1124	3750	3450	830	C	B	73))
295/60R22.5	18	150/147M	9.00	14.5	18.3	292	926	3350	3075	900	C	B	73))
315/60R22.5	18	154/150M	9.75	14.5	18.3	313	950	3750	3350	900	C	B	73))
315/70R22.5	18	154/150M	9.00	15	18.9	312	1014	3750	3350	900	C	B	73))



PM118

- Enhanced tread compounds and siping fight irregular wear and provides long life in regional and all-position applications
- Premium 5-rib tread design with wide shoulders provides for durability and even wear
- Durable casing provides long original tread life and promotes multiple retreads



Size	PR	Loading Index	Rim	Tread Depth		Total Width (mm)	Overall Diameter (mm)	Load Capacity		Max Pressure (kpa)	Labeling Information		
				(mm)	32 nds			Single (kg)	Dual (kg)		Noise	Ⓜ	Ⓝ
10R22.5	16	144/142M	7.50	14	17.6	254	1019	2800	2650	900	C	B	71))



PM216



- Advanced tread compounds and internal construction provides low rolling resistance and greater mileage
- Extensive tread siping helps fight irregular wear in free rolling positions
- Durable casing provides long original tread life and promotes multiple retreads

Size	PR	Loading Index	Rim	Tread Depth		Total Width (mm)	Overall Diameter (mm)	Load Capacity		Max Pressure (kpa)	Labeling Information		
				(mm)	32 nds			Single (kg)	Dual (kg)		Noise	Ⓜ	Ⓝ
11R22.5	16	148/145M	8.25	15	18.9	279	1054	3150	2900	850	D	B	72))
11R24.5	16	149/146M	8.25	15	18.9	279	1104	3250	3000	830	—	—	—
12R22.5	18	152/149L	9.00	16.5	20.8	300	1085	3550	3250	930	D	B	72))
13R22.5	18	154/151M	9.00	15	18.9	320	1124	3750	3450	830	D	B	72))
215/75R17.5	16	135/133M	6.00	13	16.4	211	767	2180	2060	860	D	B	72))
225/70R19.5	14	128/126M	6.75	13	16.4	226	811	1800	1700	760	D	B	72))
235/75R17.5	18	143/141J	6.75	13	16.4	233	797	2725	2575	860	D	B	72))
245/70R19.5	16	135/133M	7.50	13	16.4	248	839	2180	2060	830	D	B	72))
255/70R22.5	16	140/137L	7.50	14	17.6	255	930	2500	2300	830	D	B	72))
265/70R19.5	16	143/141M	7.50	13	16.4	262	867	2725	2575	860	D	B	72))
275/70R22.5	16	148/145M	8.25	15	18.9	276	958	3150	2900	900	D	B	72))
275/80R22.5	16	149/146M	8.25	15.5	19.5	276	1012	3250	3000	850	D	B	72))
285/70R19.5	18	150/148J	8.25	13	16.4	283	895	3350	3150	900	D	B	72))
295/75R22.5	14	144/141M	9.00	15	18.9	298	1014	2800	2575	760	D	B	72))
295/80R22.5	18	152/149M	9.00	16	20.2	298	1044	3550	3250	900	D	B	72))
305/70R19.5	18	148/145L	9.00	14	17.6	305	923	3150	2900	850	D	B	72))
315/80R22.5	20	156/150M	9.00	16.5	20.8	312	1076	4000	3350	860	D	B	72))
8R19.5	12	124/122M	6.00	13	16.4	203	859	1600	1500	760	—	—	—



PM329



- Innovative open shoulder tread design provides outstanding traction and promotes even wear
- 28/32" original tread depth for excellent mileage in long and short haul applications
- Heavy duty casing for stability and promotion of retreading

Size	PR	Loading Index	Rim	Tread Depth		Total Width (mm)	Overall Diameter (mm)	Load Capacity		Max Pressure (kpa)	Labeling Information		
				(mm)	32 nds			Single (kg)	Dual (kg)		♻️	🚗	Noise (dB)
275/70R22.5	16	148/145M	8.25	20.5	26	276	964	3150	2900	900	C	B	74))
295/60R22.5	18	150/147M	9.00	20	25	292	932	3350	3075	900	C	B	74))
295/80R22.5	18	152/149M	9.00	20	25	298	1050	3550	3250	900	C	B	74))
305/70R19.5	18	148/145K	9.00	19	24	305	929	3150	2900	850	C	B	74))
315/60R22.5	18	152/148M	9.75	20	25	313	950	3550	3150	900	C	B	74))
315/70R22.5	18	154/150M	9.00	22	28	312	1020	3750	3350	900	C	B	74))
315/80R22.5	20	156/150M	9.00	22	28	312	1082	4000	3350	860	C	B	74))



PM516



- Advanced tread compounds and internal construction provides low rolling resistance and longer mileage
- Closed-shoulder tread design provides even wear while maintaining excellent traction
- Deep 26/32" tread with stone drilling protectors promotes long original mileage

Size	PR	Loading Index	Rim	Tread Depth		Total Width (mm)	Overall Diameter (mm)	Load Capacity		Max Pressure (kpa)	Labeling Information		
				(mm)	32 nds			Single (kg)	Dual (kg)		♻️	🚗	Noise (dB)
11R22.5	16	148/145L	8.25	24	30	279	1065	3150	2900	850	—	—	—
11R24.5	16	149/146L	8.25	24	30	279	1116	3250	3000	830	—	—	—
295/75R22.5	14	144/141L	9.00	20.5	26	298	1020	2800	2575	760	—	—	—



PM128



- Tread pattern and heavy ply rating designed for multiple uses
- 6-rib design excellent for free rolling applications
- Durable casing provides long original tread life and promotes multiple retreads

Size	PR	Loading Index	Rim	Tread Depth		Total Width (mm)	Overall Diameter (mm)	Load Capacity		Max Pressure (kpa)	Labeling Information		
				(mm)	32 nds			Single (kg)	Dual (kg)		♻️	🚗	Noise (dB)
385/65R22.5	20	160K	11.75	16	20.2	389	1072	4500	—	900	C	B	72))
425/65R22.5	20	165K	13.00	17	21.4	430	1124	5150	—	825	C	B	72))



PM135



- The four-layer belts structure provides excellent high-speed performance, durability and comfort performance.
- Four fold line grooves provide good high speed performance and wet traction.
- The optimal sidewall angular design of the blocks provides excellent traction and braking performance.
- The deeper groove on the shoulder effectively reduces the heat generated by the tire.

Size	PR	Loading Index	Rim	Tread Depth		Total Width (mm)	Overall Diameter (mm)	Load Capacity		Max Pressure (kpa)	Labeling Information		
				(mm)	32 nds			Single (kg)	Dual (kg)		Rolling Resistance	Wet Grip	Noise
10R17.5	16	143/141J	7.50	12	15.1	254	858	2725	2575	850	—	—	—
9.5R17.5	18	143/141J	6.75	12	15.1	240	842	2725	2575	900	—	—	—



PM166



- 5-rib tread design with special compounds enhances even wear, traction in long haul steer axle positions
- Platform rock ejectors prevent stone drilling and stone retention to improve casing retreadability and durability
- Features multiple sipes design to enhance even wear, traction in long haul steer axle positions

Size	PR	Loading Index	Rim	Tread Depth		Total Width (mm)	Overall Diameter (mm)	Load Capacity		Max Pressure (kpa)	Labeling Information		
				(mm)	32 nds			Single (kg)	Dual (kg)		Rolling Resistance	Wet Grip	Noise
6.50R16	12	110/105L	5.50F	10	12.6	180	750	1060	925	670	—	—	—
7.00R16	14	118/114L	5.50F	10.5	13.2	200	775	1320	1180	770	—	—	—
7.50R16	14	122/118L	6.00G	12.5	15.7	215	805	1500	1320	770	—	—	—
8.25R16	16	128/124L	6.50H	12.5	16.0	235	855	1800	1600	670	—	—	—
7.50R20	14	130/128L	6.0	12.5	15.7	213	935	1900	1800	830	—	—	—



PM168



- Zigzag lateral grooves provide excellent drainage and grip.
- Wide shoulder design increases tire shoulder rigidity and improves tire high speed performance.
- The design of the raised bottom block effectively improves the self-cleaning of the tire.
- The variable pitch pattern design improves the noise performance of the tire.

Size	PR	Loading Index	Rim	Tread Depth		Total Width (mm)	Overall Diameter (mm)	Load Capacity		Max Pressure (kpa)	Labeling Information		
				(mm)	32 nds			Single (kg)	Dual (kg)		Rolling Resistance	Wet Grip	Noise
385/55R19.5		160K	12.25	15	18.9	386	919	4500	—	900	C	B	72))
385/55R22.5		160K	12.25	15	18.9	385	996	4500	—	900	C	B	72))
385/65R22.5 20		160K	11.75	15	18.9	389	1072	4500	—	900	C	B	72))
435/50R19.5		160J	14.00	13	16.4	438	931	4500	—	900	C	B	72))
445/45R19.5		160J	15.00	14	17.6	446	895	4500	—	900	C	B	72))



PM218



- Enhanced tread compounds and siping fight irregular wear and provides long life in regional and all-position applications
- Premium 5-rib tread design with wide shoulders enhances durability and even wear
- Regular original tread depth allows for longer wear in regional high scrub applications

Size	PR	Loading Index	Rim	Tread Depth		Total Width (mm)	Overall Diameter (mm)	Load Capacity		Max Pressure (kpa)	Labeling Information		
				(mm)	32 nds			Single (kg)	Dual (kg)		Rolling Resistance	Wet Grip	Noise
11R22.5	16	148/145M	8.25	15	18.9	279	1054	3150	2900	850	—	—	—



PM511



- Innovative open shoulder tread design provides outstanding traction and promotes even wear
- 28/32" original tread depth for excellent mileage in long and short haul applications
- Heavy duty casing for stability and promotion of retreading

Size	PR	Loading Index	Rim	Tread Depth		Total Width (mm)	Overall Diameter (mm)	Load Capacity		Max Pressure (kpa)	Labeling Information		
				(mm)	32 nds			Single (kg)	Dual (kg)		W	B	Noise
10.00R20	18	149/146K	7.5	18	23	278	1054	3250	3000	930	—	—	—
11.00R20	18	152/149K	8.0	20	25	293	1085	3350	3075	830	D	B	75))
12.00R20	18	156/153K	8.5	20	25	315	1125	4000	3650	930	—	—	—
295/80R22.5	18	152/149K	9.00	22	28	298	1050	3550	3250	900	D	B	75))
315/80R22.5	20	156/150K	9.00	22	28	312	1082	4000	3350	860	D	B	75))



PM301



- Chip, cut and abrasion resistant tread compounds
- Max. 32/32" tread depth promotes increased mileage and long service life
- Aggressive tread offers excellent traction for severe off-highway use; no on-highway speed restrictions

Size	PR	Loading Index	Rim	Tread Depth		Total Width (mm)	Overall Diameter (mm)	Load Capacity		Max Pressure (kpa)	Labeling Information		
				(mm)	32 nds			Single (kg)	Dual (kg)		W	B	Noise
12.00R20	18	154/151J	8.5	21.5	27	315	1136	3750	3450	830	—	—	—
13R22.5	18	154/151J	9.00	21.5	27	320	1124	3750	3450	830	D	B	73))



PM305



- Chip, cut and abrasion resistant tread compounds
- Max. 32/32" tread depth promotes increased mileage and long service life
- Aggressive tread offers excellent traction for severe off-highway use; no on-highway speed restrictions

Size	PR	Loading Index	Rim	Tread Depth		Total Width (mm)	Overall Diameter (mm)	Load Capacity		Max Pressure (kpa)	Labeling Information		
				(mm)	32 nds			Single (kg)	Dual (kg)		🚛	🚚	Noise (dB)
11R22.5	16	148/145J	8.25	25	31	279	1065	3150	2900	850	—	—	—
12.00R24	18	158/155F	8.5	31.5	40	315	1238	4250	3875	830	—	—	—
295/80R22.5	18	152/149J	9.00	22	28	298	1050	3550	3250	900	C	B	75))
315/80R22.5	20	156/150J	9.00	22	28	312	1082	4000	3350	860	C	B	75))



PM306



- The puncture-resistant formula provides excellent puncture resistance, wet skid resistance and good wear resistance.
- The transverse big block pattern effectively provides excellent driving and braking properties.
- The horizontal open wide groove design provides good self-cleaning performance.
- The design of the reinforcing ribs between the blocks effectively suppresses the crack at the bottom of the grooves.

Size	PR	Loading Index	Rim	Tread Depth		Total Width (mm)	Overall Diameter (mm)	Load Capacity		Max Pressure (kpa)	Labeling Information		
				(mm)	32 nds			Single (kg)	Dual (kg)		🚛	🚚	Noise (dB)
10.00R20	18	149/146G	7.5	23.5	20	278	1054	3250	3000	930	—	—	—
11R24.5	16	149/146J	8.25	24	30	279	1116	3250	3000	830	—	—	—
12R22.5	18	152/149J	9.00	25	31	300	1096	3550	3250	930	—	—	—
750R16	14	122/118G	6.00G	15.5	20	215	815	1500	1320	770	—	—	—



PM201



- Strong all-position tread pattern designed for multiple on and off highway uses
- Cut, chip and tear resistant tread compounds and heavy duty casing construction for excellent performance in tough applications
- High load carrying capacity for heavy load applications

Size	PR	Loading Index	Rim	Tread Depth		Total Width (mm)	Overall Diameter (mm)	Load Capacity		Max Pressure (kpa)	Labeling Information		
				(mm)	32 nds			Single (kg)	Dual (kg)		🚛	🚚	Noise (dB)
12.00R20	18	154/151K	8.5	17	21.4	315	1125	3750	3450	830	C	B	71))
12.00R24	20	160/157K	8.5	17	21.4	315	1226	4500	4125	900	C	B	71))
13R22.5	20	154/151M	9.00	20	25.2	320	1124	3750	3450	830	C	B	71))
315/80R22.5	20	156/150M	9.00	16.5	20.8	312	1076	4000	3350	860	C	B	71))



PM210



- Strong all-position tread pattern designed for multiple on and off highway uses
- Cut, chip and tear resistant tread compounds and heavy duty casing construction for excellent performance in tough applications
- High load carrying capacity for heavy load applications

Size	PR	Loading Index	Rim	Tread Depth		Total Width (mm)	Overall Diameter (mm)	Load Capacity		Max Pressure (kpa)	Labeling Information		
				(mm)	32 nds			Single (kg)	Dual (kg)		W	S	N
10.00R20	16	146/143L	7.5	15.5	19.5	278	1054	3000	2725	830	C	B	70))
295/80R22.5	18	152/149M	9.00	16	20.2	298	1044	3550	3250	900	C	B	70))
9.00R20	16	144/142L	7.00	15	18.9	259	1019	2800	2650	900	C	B	70))



PM211



- Strong all-position tread pattern designed for multiple on and off highway uses
- Cut, chip and tear resistant tread compounds and heavy duty casing construction for excellent performance in tough applications
- High load carrying capacity for heavy load applications

Size	PR	Loading Index	Rim	Tread Depth		Total Width (mm)	Overall Diameter (mm)	Load Capacity		Max Pressure (kpa)	Labeling Information		
				(mm)	32 nds			Single (kg)	Dual (kg)		W	S	N
11R22.5	16	148/145M	8.25	15.5	19.5	279	1054	3150	2900	850	C	B	70))
11R24.5	16	149/146M	8.25	15.5	19.5	279	1104	3250	3000	830	—	—	—



PM268



- Comprehensive performance formula design, providing excellent wear resistance and tear resistance performance and low heat build-up.
- Three longitudinal fold line main grooves provide good directional stability and high speed performance.
- The small bumps at the bottom of the groove effectively improve the self-cleaning of the tire.
- The unique shoulder groove design is more conducive to heat dissipation.

Size	PR	Loading Index	Rim	Tread Depth		Total Width (mm)	Overall Diameter (mm)	Load Capacity		Max Pressure (kpa)	Labeling Information		
				(mm)	32 nds			Single (kg)	Dual (kg)		W	S	N
10.00R20	18	149/146L	7.5	15.5	19.5	278	1054	3250	3000	930	—	—	—
11.00R20	18	152/149L	8.0	16	20.1	293	1085	3350	3075	830	—	—	—
12.00R20	18	154/151J	8.5	15	18.8	315	1125	3750	3450	830	—	—	—



PM302



- Open shoulder design provides excellent traction in wet and dry conditions
- Full-depth siping provides excellent performance throughout the life of the tread
- Heavy duty casing for stability and promotion of retreading

Size	PR	Loading Index	Rim	Tread Depth		Total Width (mm)	Overall Diameter (mm)	Load Capacity		Max Pressure (kpa)	Labeling Information		
				(mm)	32 nds			Single (kg)	Dual (kg)		W	S	N
11R22.5	16	148/145M	8.25	20	25	279	1054	3150	2900	850	C	B	75))
12R22.5	18	152/149M	9.00	20.5	26	300	1085	3550	3250	930	C	B	75))
295/80R22.5	18	152/149M	9.00	20.5	26	298	1050	3550	3250	900	C	B	75))
315/80R22.5	20	156/150K	9.00	20.5	26	312	1082	4000	3350	860	C	B	75))



PM328



- Aggressive directional tread pattern for improved traction and handling
- Extra wide tread for enhanced tread life and handling
- Heavy duty casing for stability and promotion of retreading

Size	PR	Loading Index	Rim	Tread Depth (mm)		Total Width (mm)	Overall Diameter (mm)	Load Capacity (kg)		Max Pressure (kpa)	Labeling Information		
				32	nds			Single	Dual		W	S	N
12R22.5	18	152/149K	9.00	20	25	300	1085	3550	3250	930	D	B	75))
13R22.5	18	154/151K	9.00	20	25	320	1124	3750	3450	830	D	B	75))
295/80R22.5	18	152/149K	9.00	20	25	298	1050	3550	3250	900	D	B	75))
315/80R22.5	20	156/150M	9.00	20	25	312	1082	4000	3350	860	D	B	75))



PM508



- Aggressive multi-purpose tread design ideal for on and off highway applications
- Large tread elements offer improved handling and excellent traction
- Heavy duty belt package and undertread offer increased durability, uniform wear and stability

Size	PR	Loading Index	Rim	Tread Depth (mm)		Total Width (mm)	Overall Diameter (mm)	Load Capacity (kg)		Max Pressure (kpa)	Labeling Information		
				32	nds			Single	Dual		W	S	N
215/75R17.5	16	135/133J	6.00	15	19	211	767	2180	2060	860	D	B	73))
225/70R19.5	14	128/126J	6.75	15	19	226	811	1800	1700	760	D	B	73))
235/75R17.5	18	143/141J	6.75	15	19	233	797	2725	2575	860	D	B	73))
245/70R19.5	16	135/133J	7.50	15	19	248	839	2180	2060	830	D	B	73))
265/70R19.5	16	143/141J	7.50	15	19	262	867	2725	2575	860	D	B	73))
285/70R19.5	18	150/148J	8.25	15	19	283	895	3350	3150	900	D	B	73))



PM519



- A highway drive-position tyre with deep tread for high mileage and superior traction
- Advanced tread compounds and internal construction provides low rolling resistance and longer mileage
- Cut, chip and tear resistant tread compounds and heavy duty casing construction for excellent performance in tough applications

Size	PR	Loading Index	Rim	Tread Depth (mm)		Total Width (mm)	Overall Diameter (mm)	Load Capacity (kg)		Max Pressure (kpa)	Labeling Information		
				32	nds			Single	Dual		W	S	N
7.50R16	14	122/118L	6.00G	14	18	215	805	1500	1320	770	C	B	71))
8.25R16	16	128/124L	6.5H	14	18	235	855	1700	1600	670	C	B	71))
11R22.5	16	148/145L	8.25	15.5	20	279	1065	3150	2900	850	C	B	71))
11R24.5	16	149/146L	8.25	18	23	279	1116	3250	3000	830	—	—	—
12R22.5	18	152/149L	9.00	18	23	300	1085	3550	3250	930	C	B	71))
13R22.5	18	154/151L	9.00	18	23	320	1124	3750	3450	830	C	B	71))
295/80R22.5	18	152/149L	9.00	16	20	298	1050	3550	3250	900	C	B	71))
315/80R22.5	20	156/150L	9.00	18	23	312	1082	4000	3350	860	C	B	71))



PM526



- Aggressive multi-purpose tread design ideal for on and off highway applications
- Large tread elements offer improved handling and excellent traction
- Heavy duty belt package and undertread offer increased durability, uniform wear and stability

Size	PR	Loading Index	Rim	Tread Depth (mm)		Total Width (mm)	Overall Diameter (mm)	Load Capacity (kg)		Max Pressure (kpa)	Labeling Information		
				32	nds			Single	Dual		W	S	N
385/65R22.5	20	160K	11.75	17.5	22	389	1072	4500	—	900	C	B	73))
425/65R22.5	20	165J	13.00	17.5	22	430	1124	5150	—	825	C	B	73))